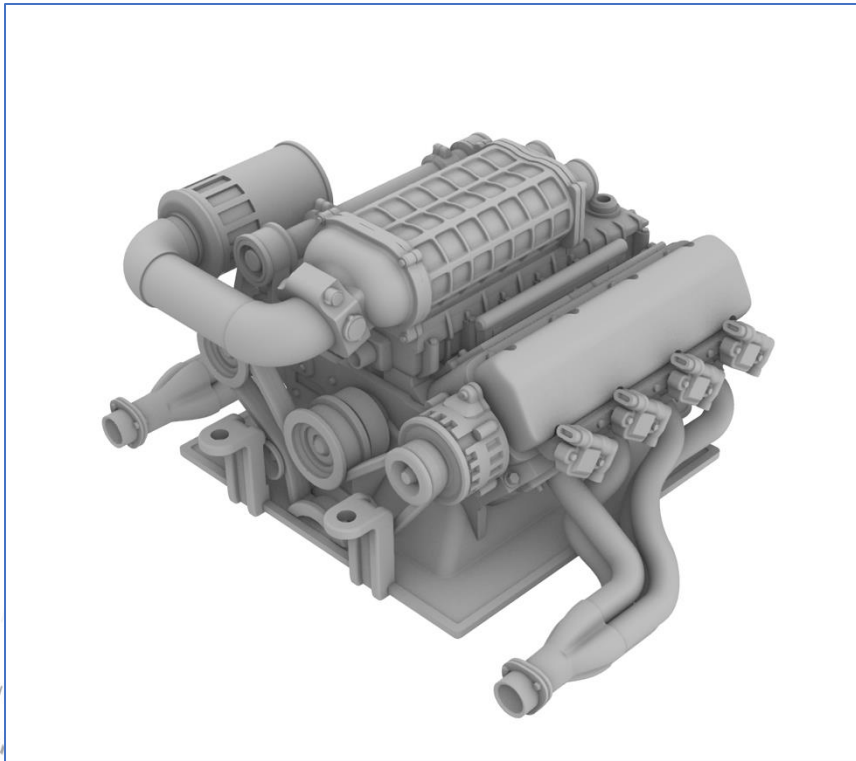




KNIGHT[®]
C U S T O M S

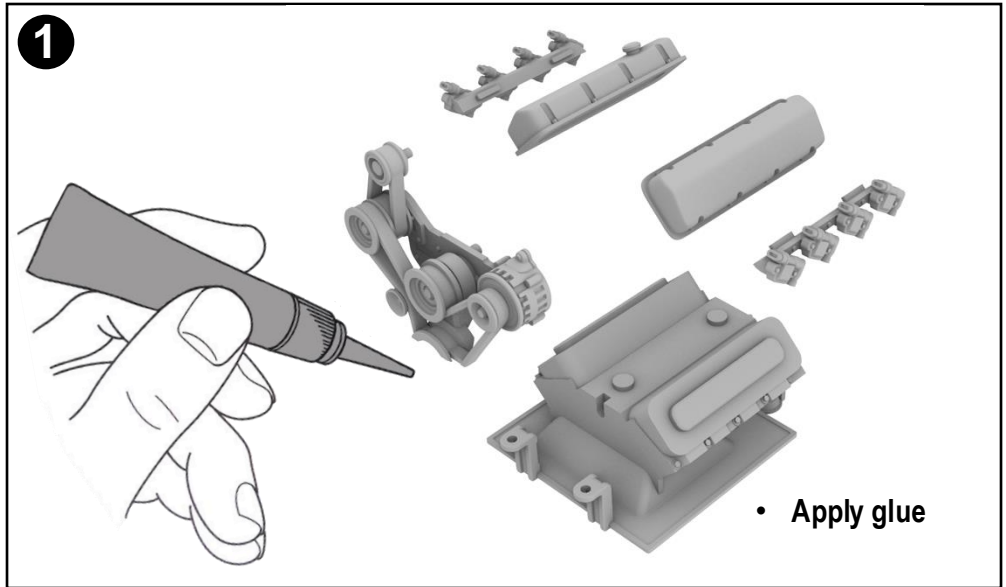


Terra Bug V8 Engine manual

1

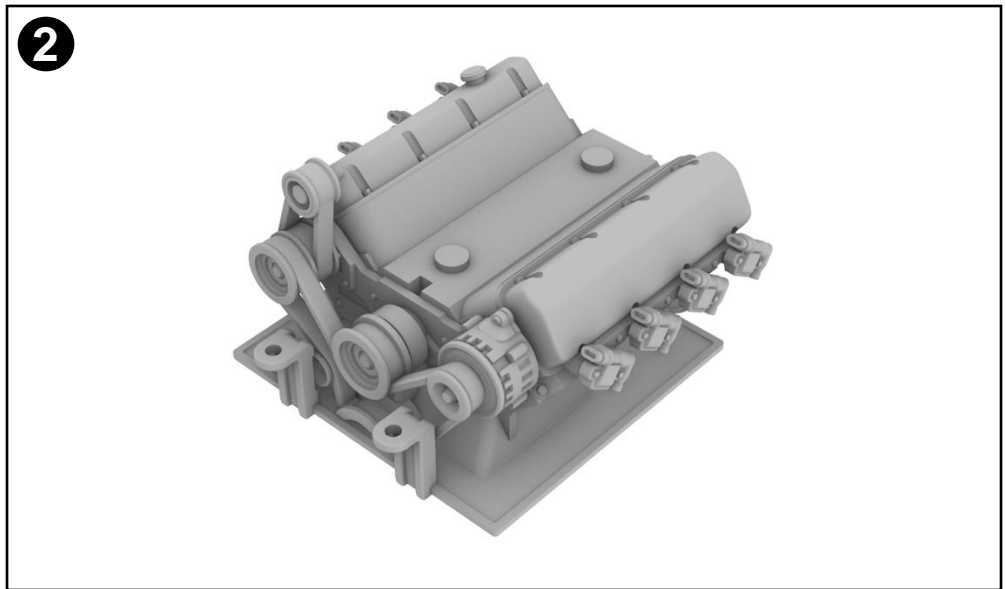
Glue the pulley, valve covers and coil packs to the engine block.

NOTE: Make sure you note the correct orientation of the parts.



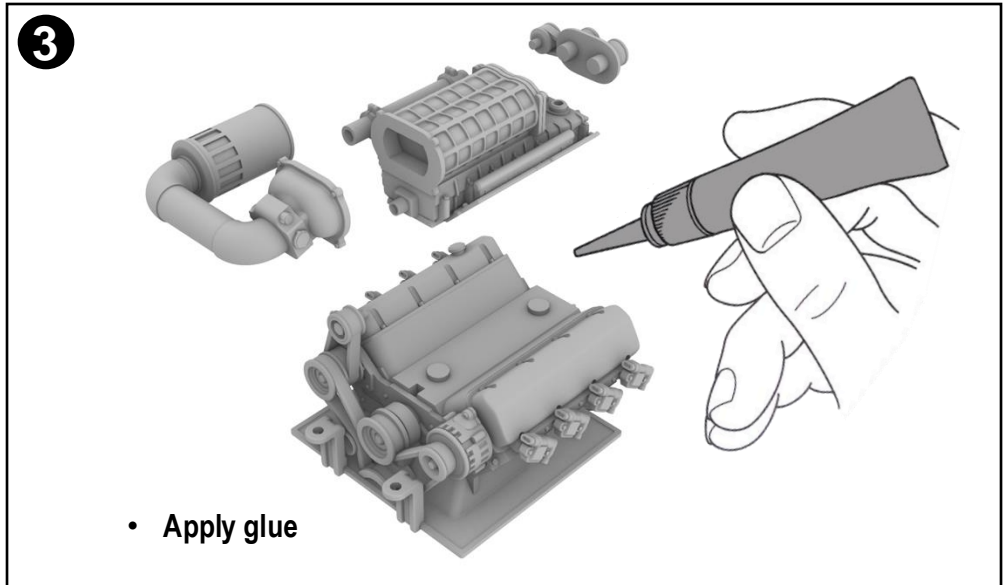
2

Engine block base complete.



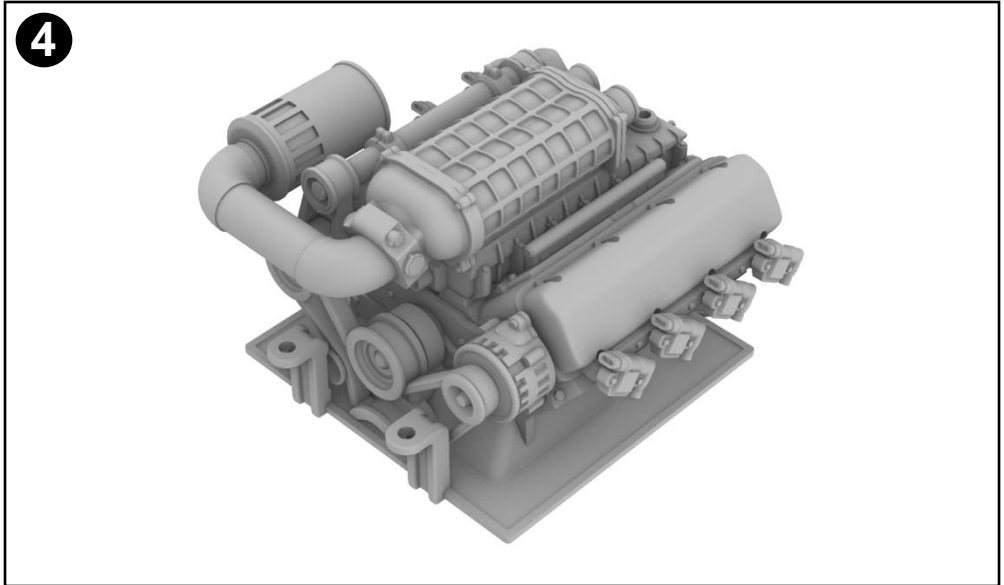
3

Glue the supercharger, supercharger pulley and air filter to the engine block base assembly.



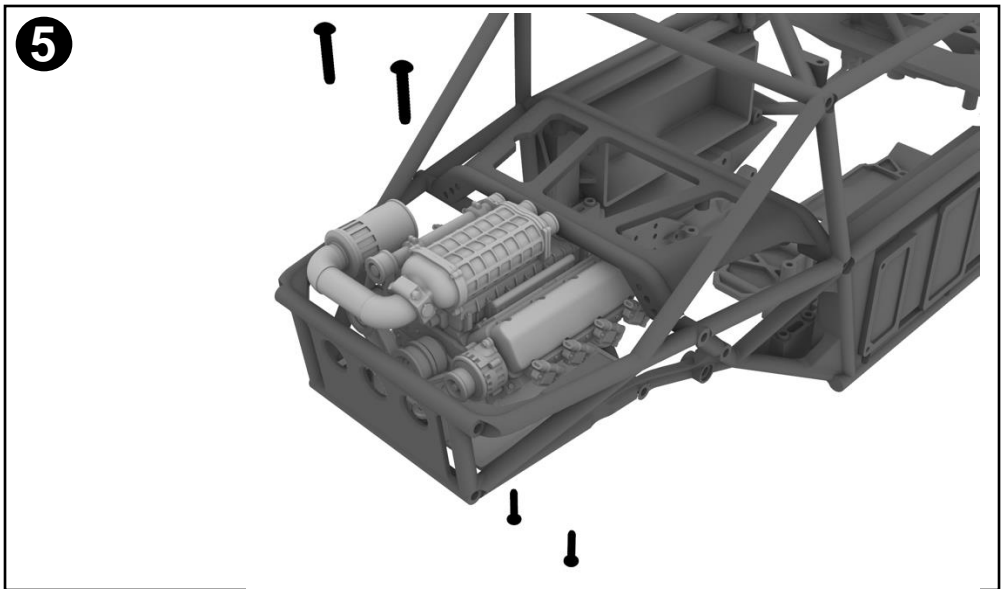
4

Main engine complete and ready to install in the H10 cage.



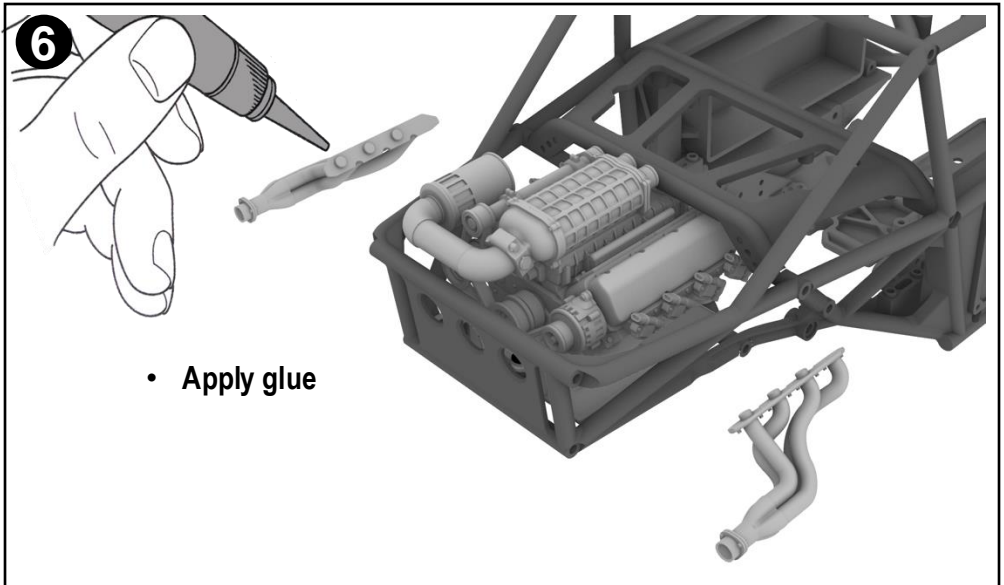
5

Remove the stock fuel tank and mount the engine using the stock screws.



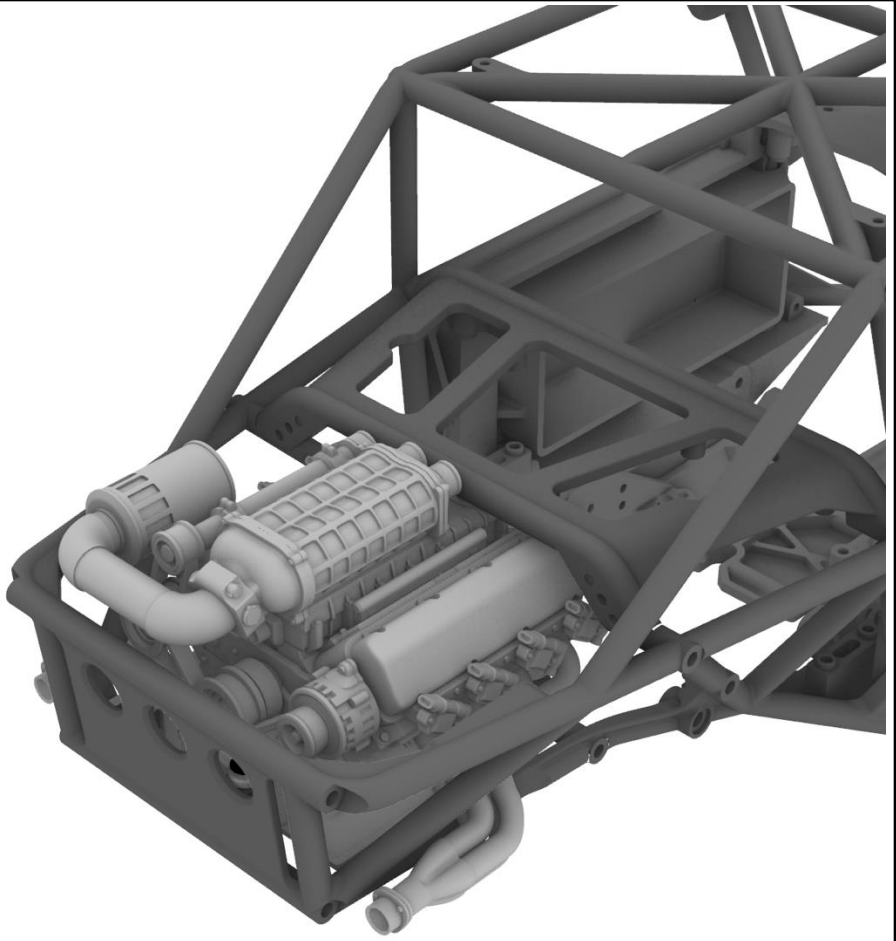
6

Glue the exhausts in place after the engine is mounted.



7

Engine install complete.

7

Congratulations, your Terra Bug V8 engine is complete.

Note: We recommend Bambu Lab PLA Matte for best results, however PLA has a lower melting point and you should not leave your RC stationary in direct sunlight for extended periods. Doing so might cause parts to warp or deform.