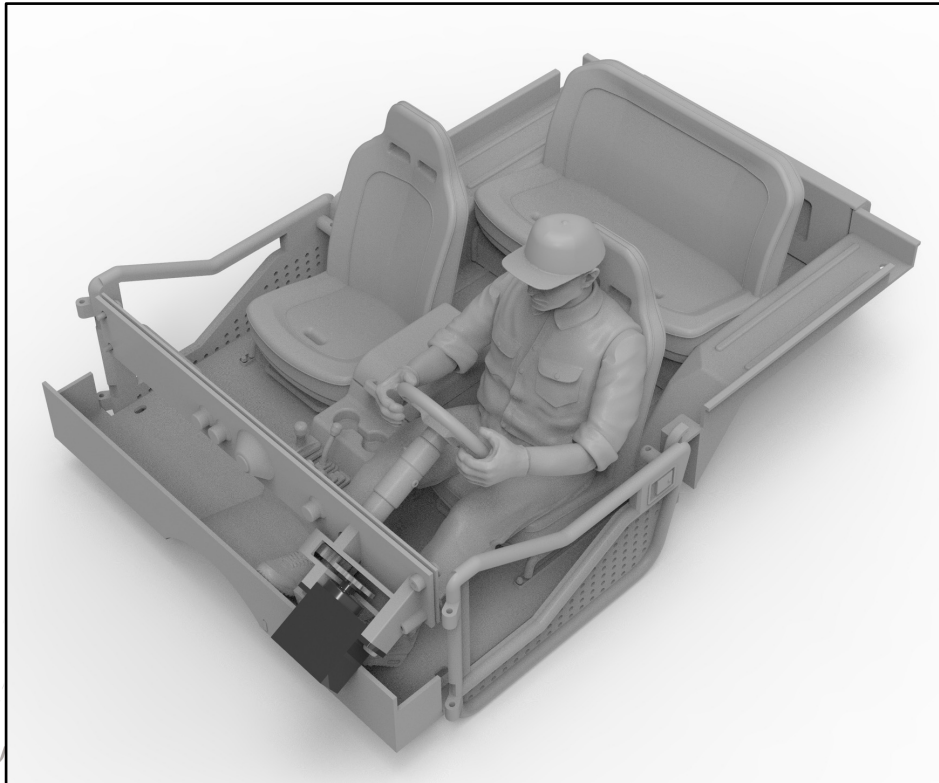




KNIGHT[®]
C U S T O M S



CJ-7 interior detail set manual

Items required

Sold separately

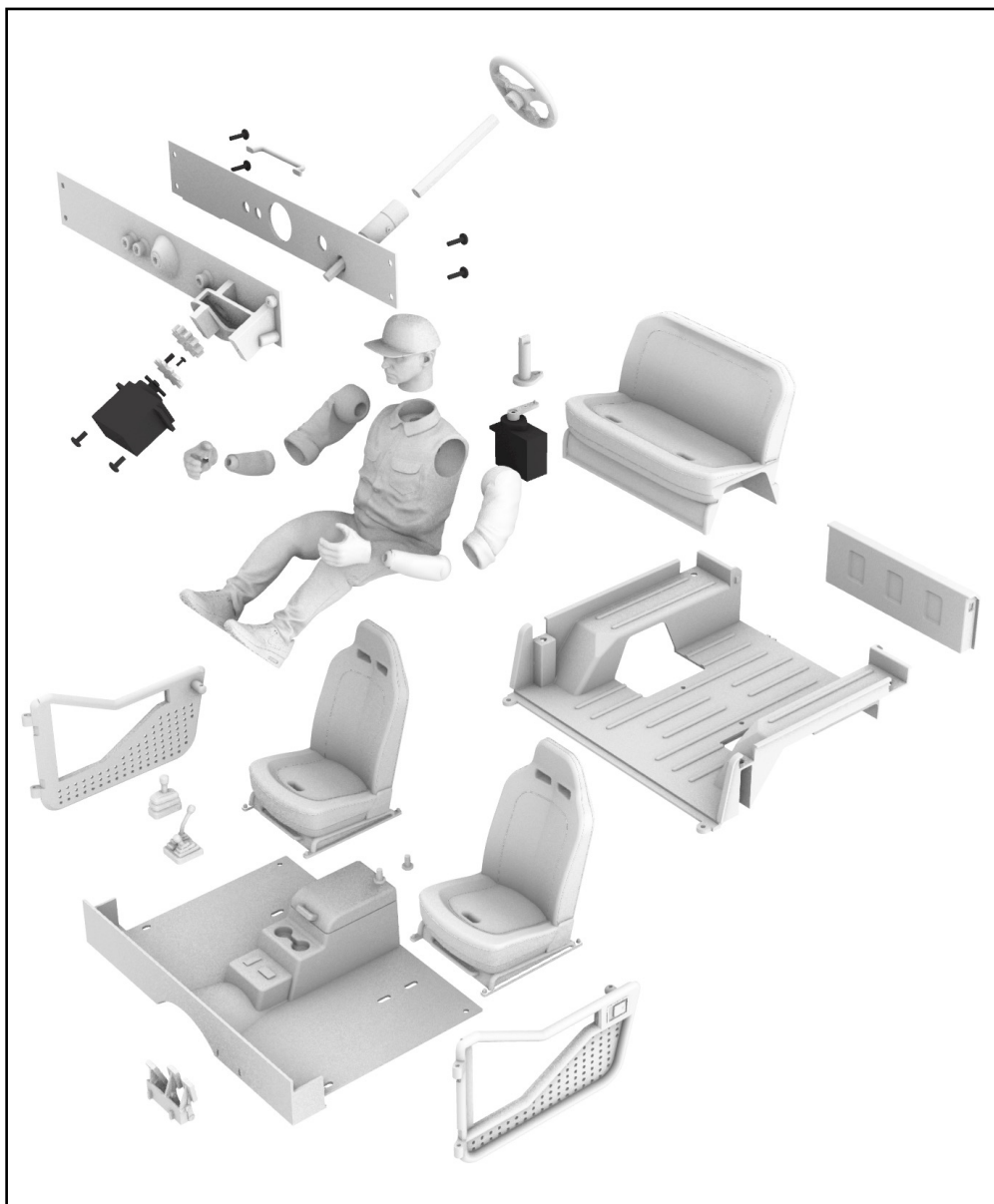
You will need 2 micro servos. We recommend Hitec HS-55 Feather Servo 7.5g Hybrid I.C. servos.

Two M1.5x8mm screws will be needed for the rear tailgate. All other screws can be reused from the stock RTR body or are included with the servos.

We recommend using scale winch rope to articulate the arms.

A regular hot glue gun or instant glue can be used to fix required parts in place.

NOTE: Using other micro servos may require more modifications to ensure the servo spline location is the correct offset to the 3D printed parts.



3D printer set up

Your purchase includes all the STL files to complete the assembly. G-codes are also included in the download. These G-codes are a recommended starting point for those new to 3D printing or just looking for a quick start.

The G-codes can be sent directly to your printer and come with our recommended settings, orientation & supports for printing in PLA filament. Unless otherwise stated, we recommend Bambu Lab PLA Matte for best results.

G-codes are Included for the Bambu Lab (X1) & Prusa series of printers. The Prusa G-codes should also work on other printers such as the Ender series of printers that have a print bed 20x20cm or larger.

1

Driver arm assembly

Thread the cord through the right arm to join the two parts together.

NOTE: We recommend using scale winch rope to articulate the arms

1

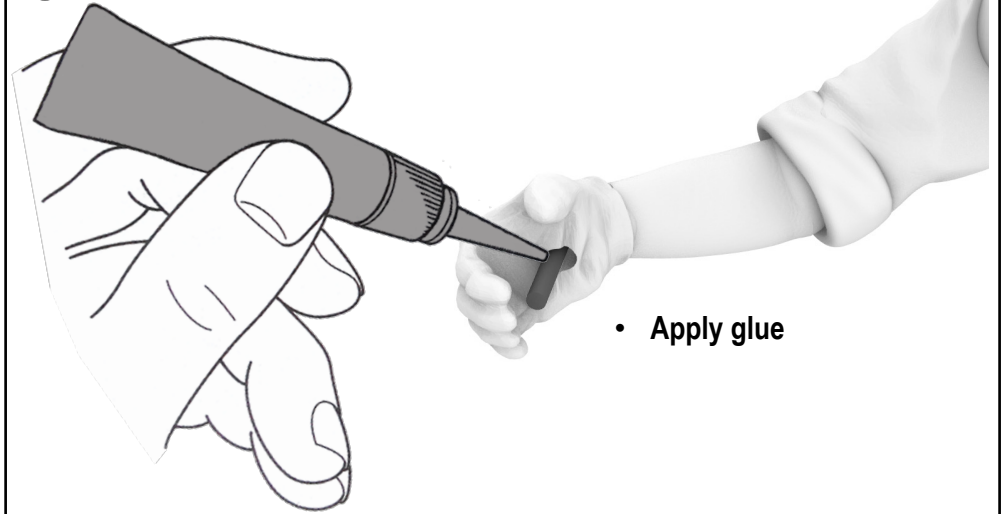


2

Glue the cord to the hand being sure the joints move smoothly.

NOTE: Do not glue the cord at the other end.

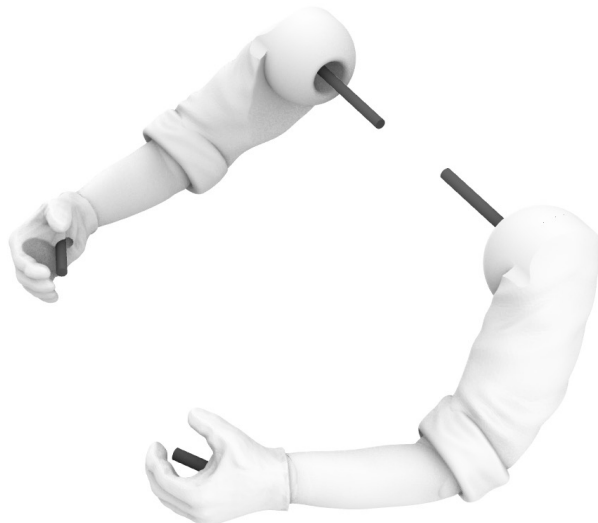
2



3

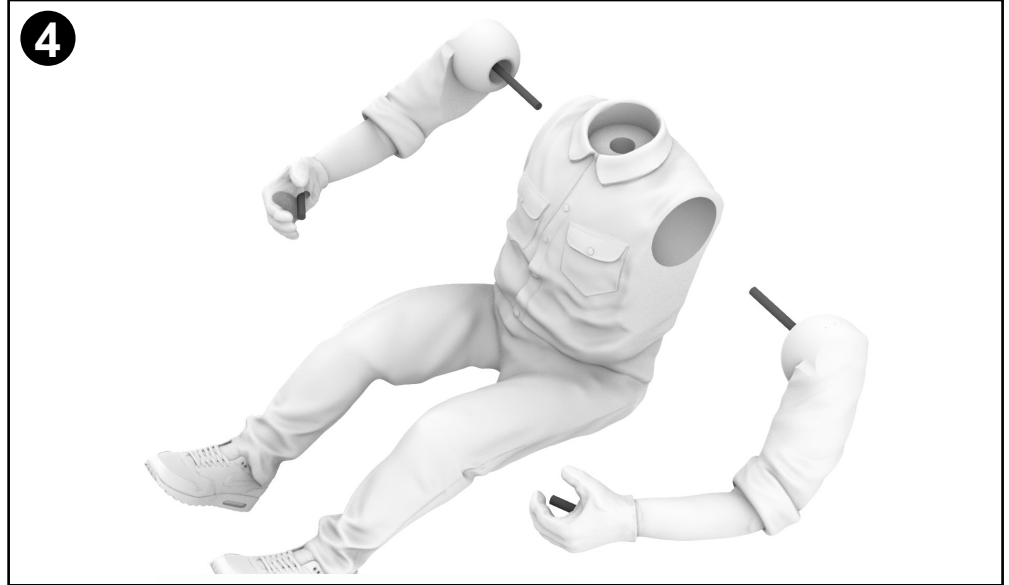
Repeat for the left arm

3



4

Insert cord of both arms into the driver arm sockets.



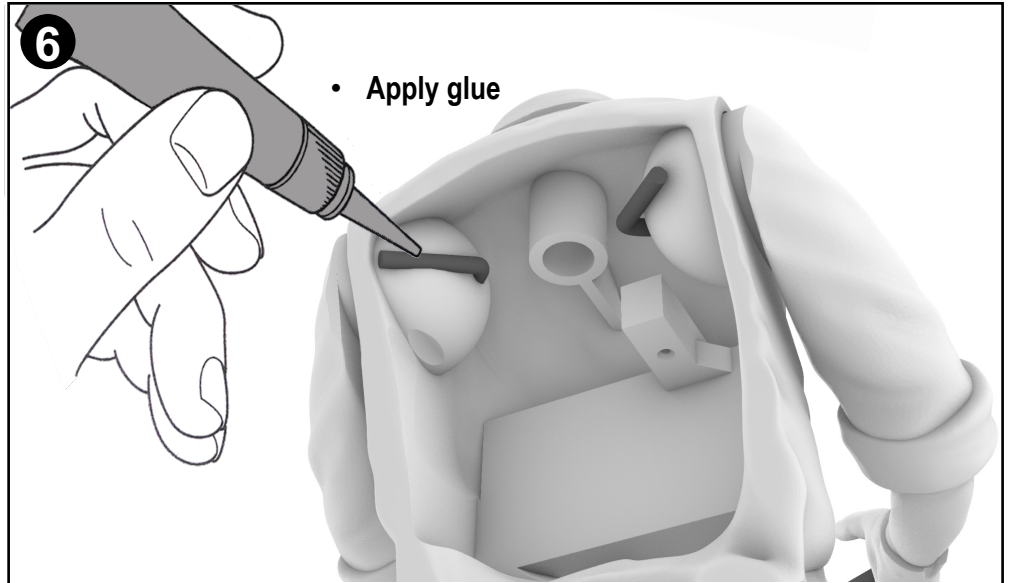
5

Pull cords tight to ensure both arms are located in the socket and can move freely.



6

Both right and left cord can be glue in place inside the body as shown.

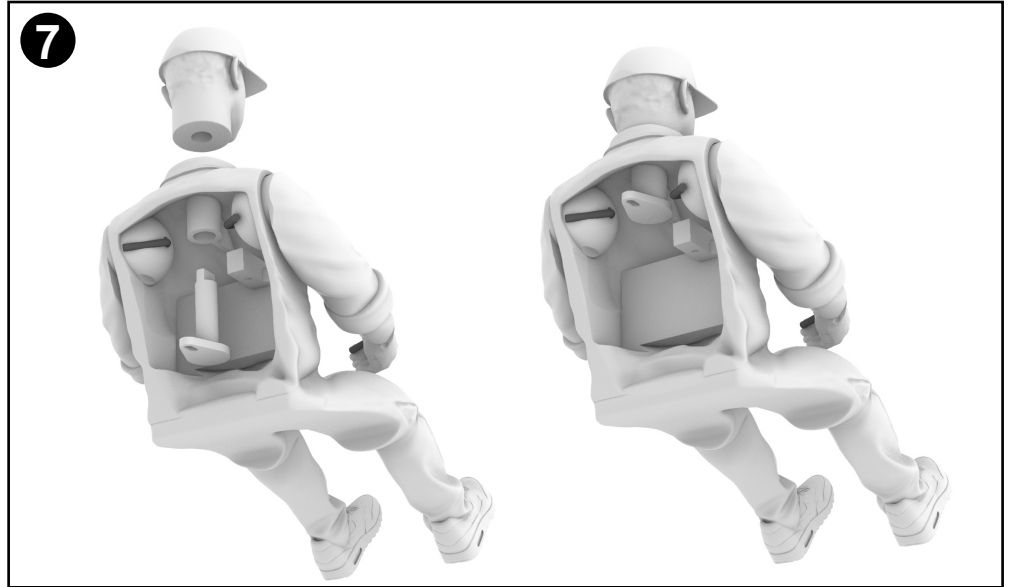


NOTE: be careful not to get glue into the shoulder joint area.

7

Driver head install.

Install head posts onto the body.

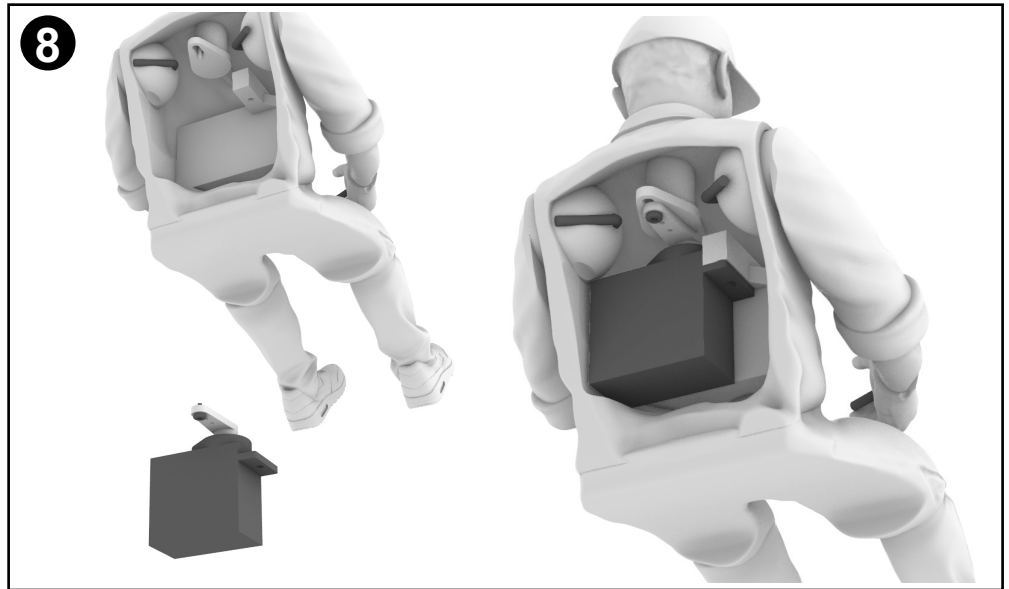


8

Driver head servo install.

The servo will need to have the left tab removed to make the servo fit. We recommend using hot glue to hold the servo in place.

NOTE: Be sure your servo is centered before assembly.



9

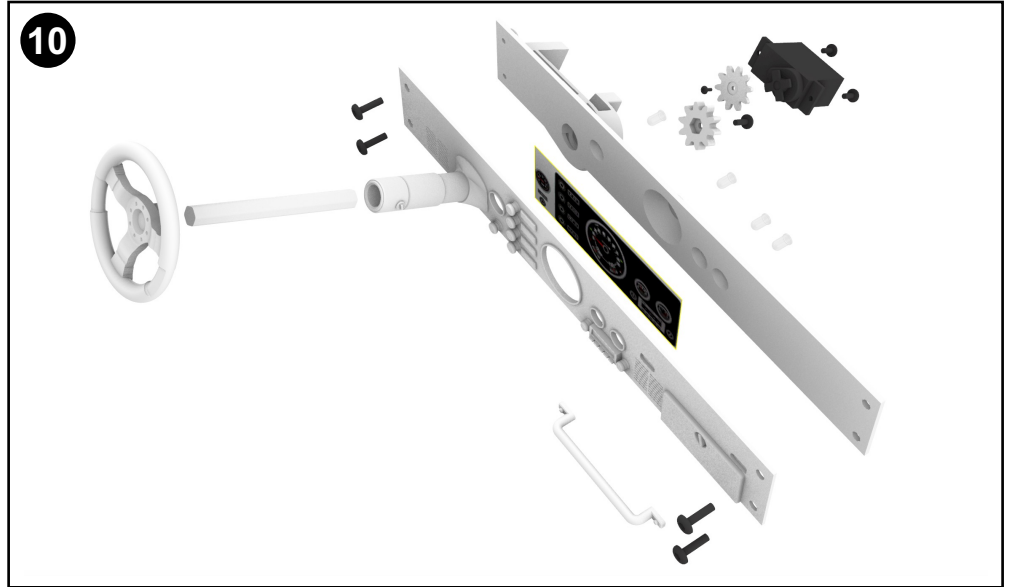
Congratulations, your driver is complete.

NOTE: Now is a good time to connect to your receiver & electronics to make sure everything is moving correctly and the head is facing forward when the steering is in the neutral position.



10

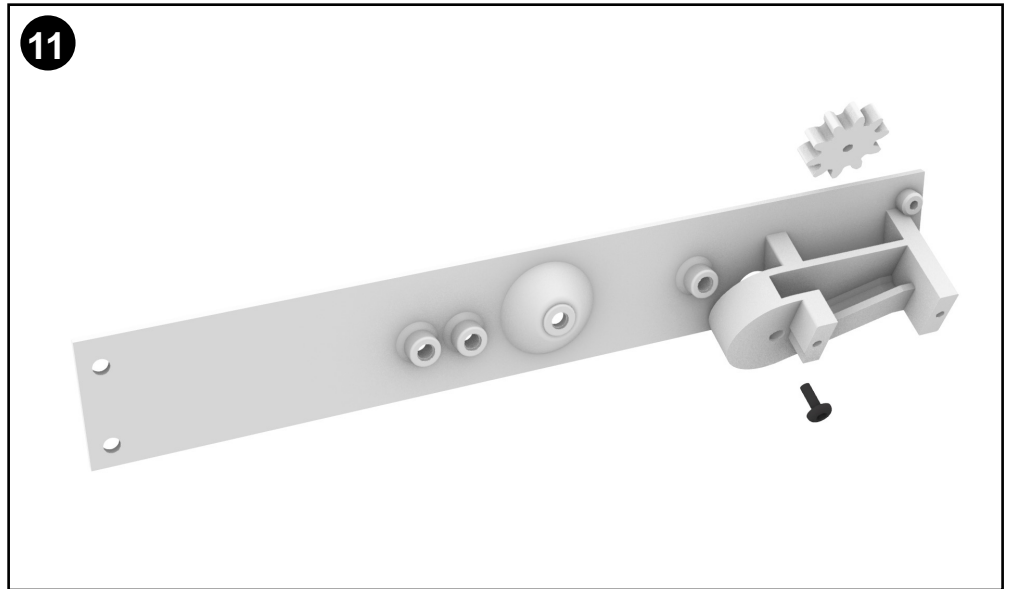
Working dash sub assembly exploded view.



11

Install the steering post gear and hold in place with a M2x5mm screw

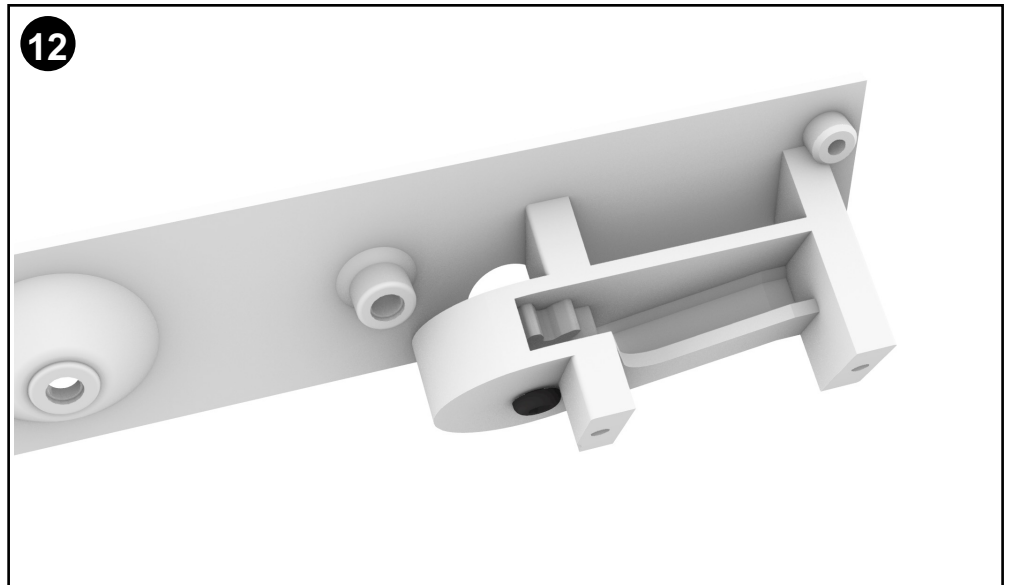
NOTE: Be sure the mounting hole is cleared of any unwanted material.



12

Check that the gear can move freely and there is no binding.

NOTE: Do not overtighten the screw.

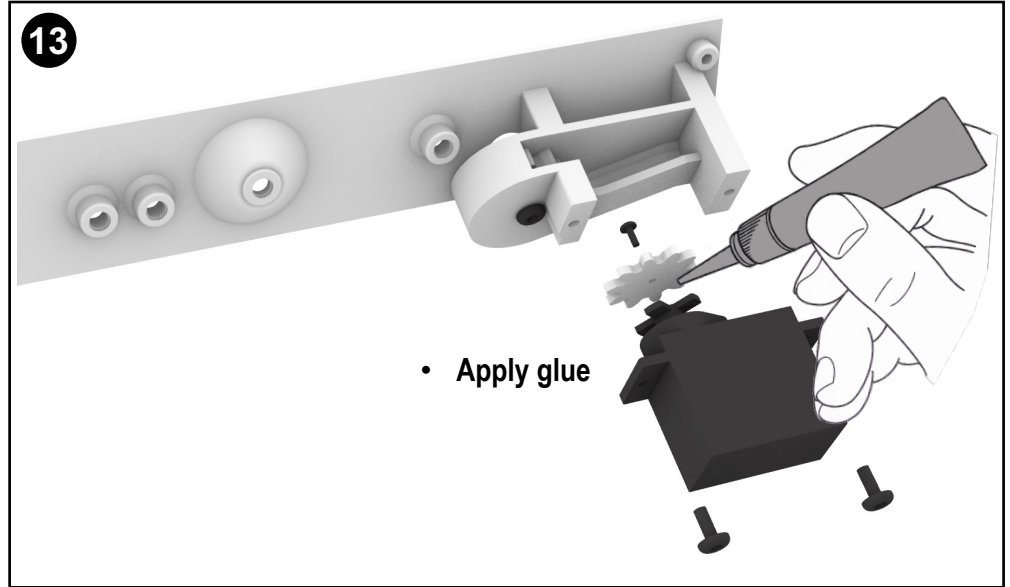


13

Steering wheel servo install.

Install servo using the screws included with the servo

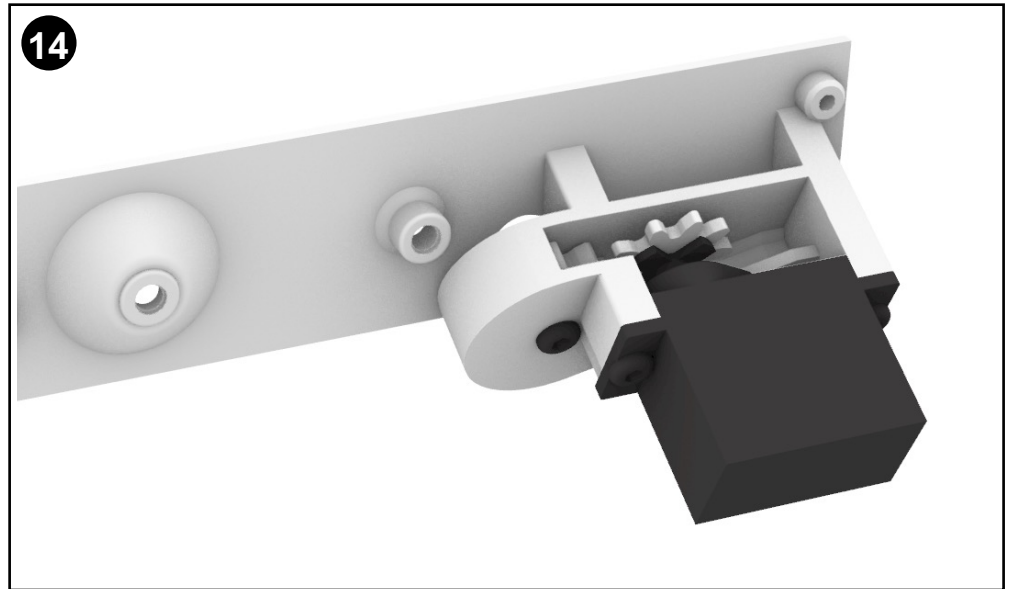
NOTE: apply a small amount of glue to the steering servo gear & servo horn.



14

Steering wheel servo install complete

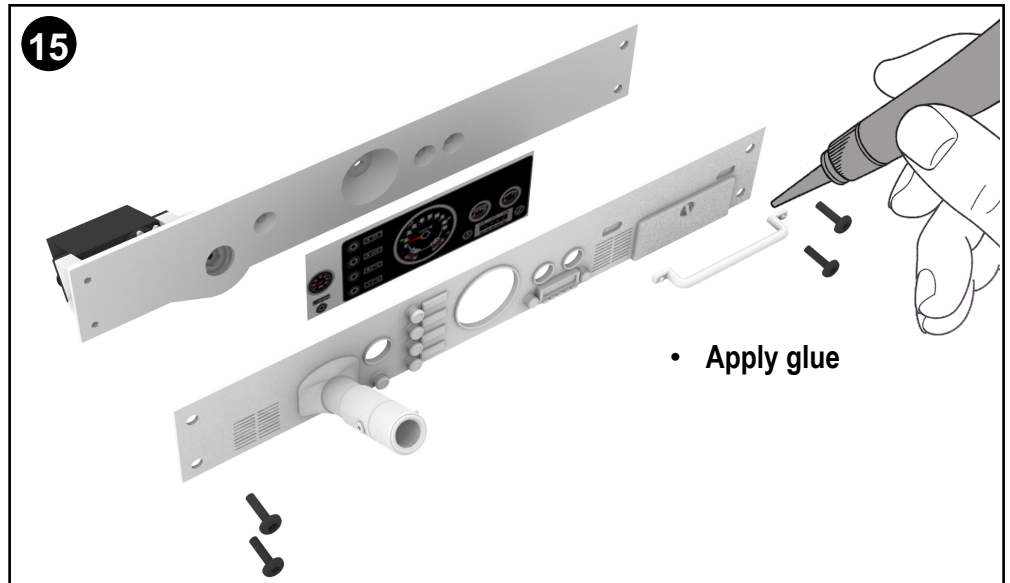
NOTE: Be sure your servo is centered and the gears move smoothly.



15

Dash panel install onto the stock body. The stock body is sandwiched between the two parts shown using the stock mounting screws included with the body.

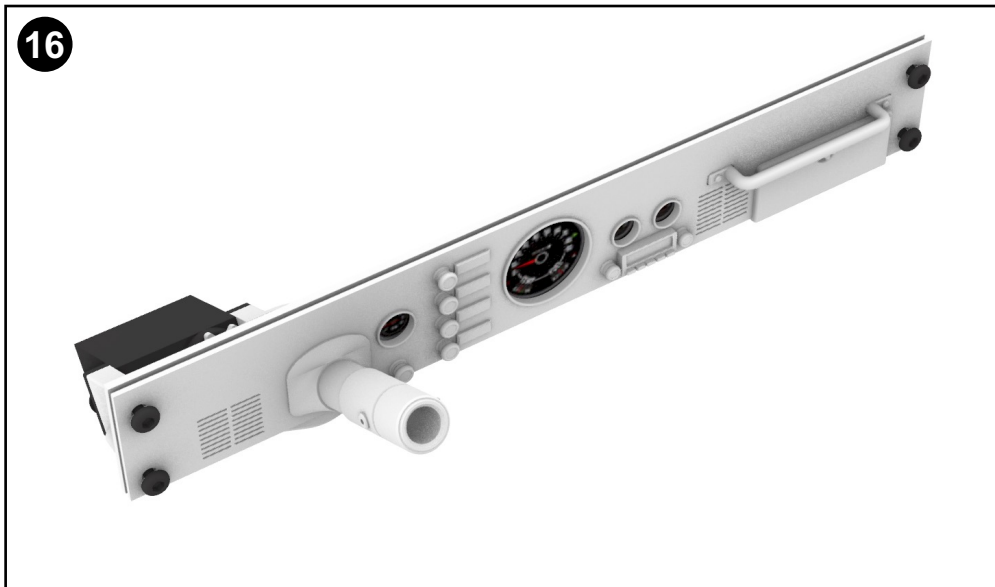
NOTE: you can use the stock Axial dash sticker (included with Axial CJ-7 body)



16

Dash panel installed on the body.

NOTE: 3mm LED's can be added to backlight the dash if desired.

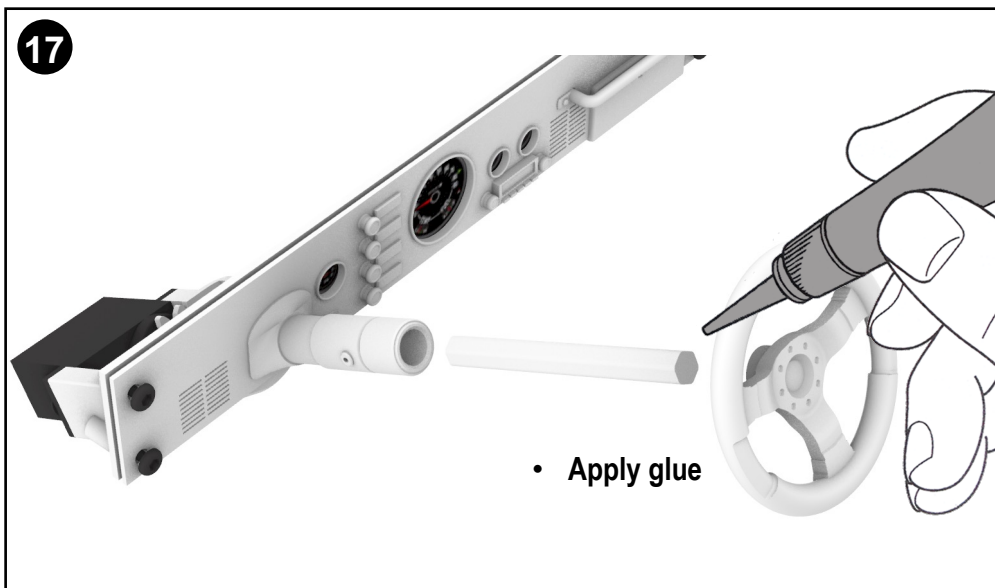


17

Steering wheel install.

Ensure all extra material is removed so the that steering post moves smoothly in the steering column. Apply glue to the steering wheel. The other end is held in place by a screw.

NOTE: Be sure your servo is centered before assembly.



18

Congratulations, your working dash is complete.

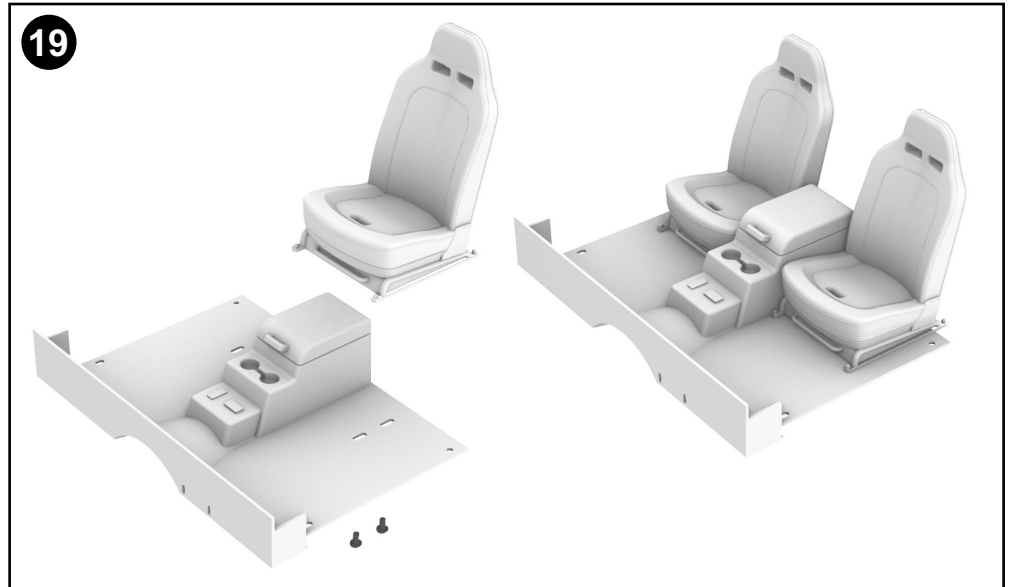
NOTE: Now is a good time to connect to your receiver & electronics to make sure everything is moving correctly.



19

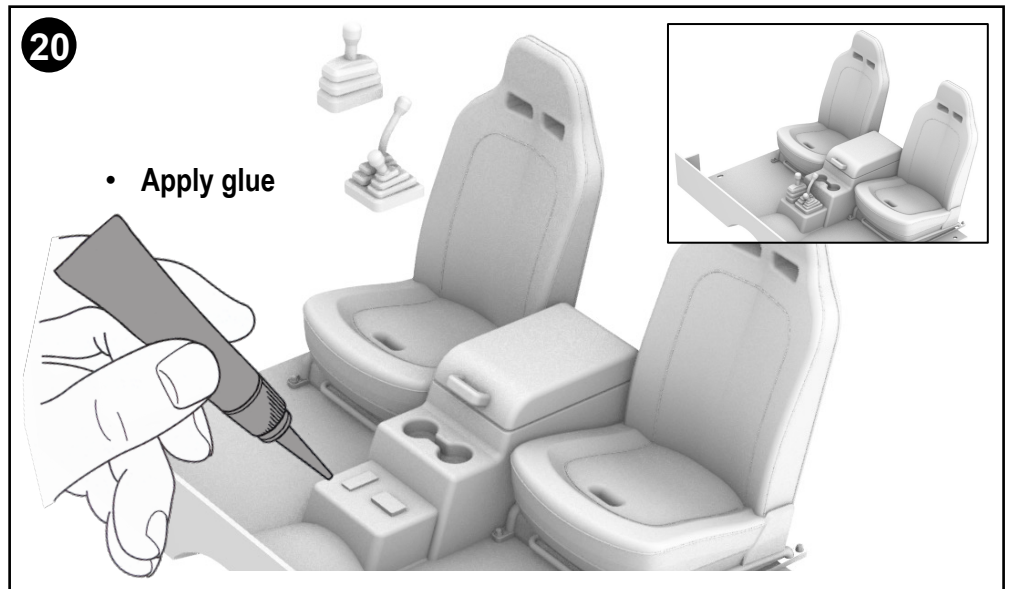
Interior floor install.

Install front seats onto the front floor using the stock screws from the Axial CJ-7 body.



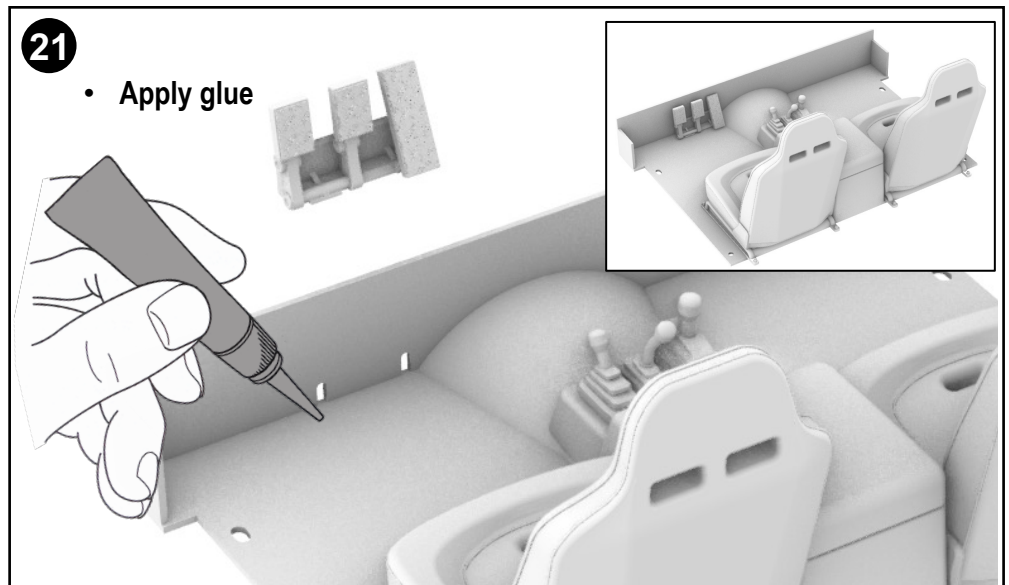
20

Shifter install.



21

Pedal box install.

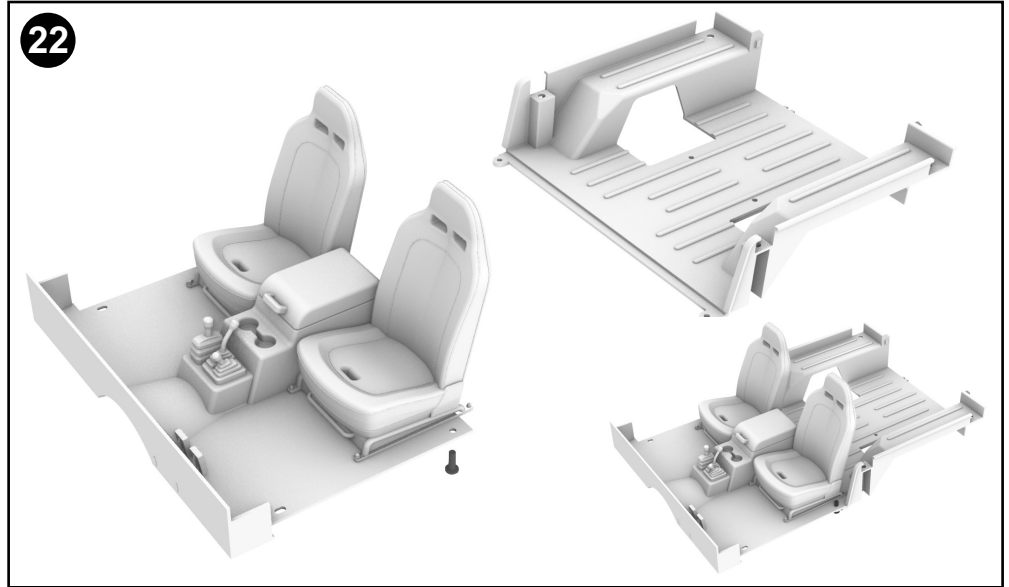


22

Rear floor install.

Use the stock screws from the Axial CJ-7 body to join the two parts together.

NOTE: Direction of screws if you are going to use the stock door latch post. You can flip this direction if you are going doorless.

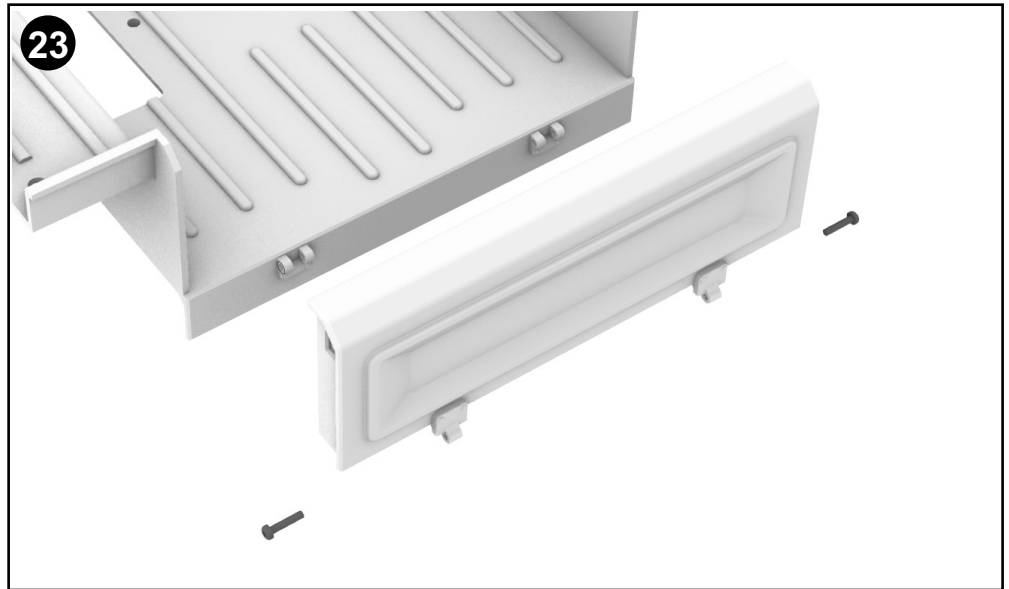


23

Tailgate install.

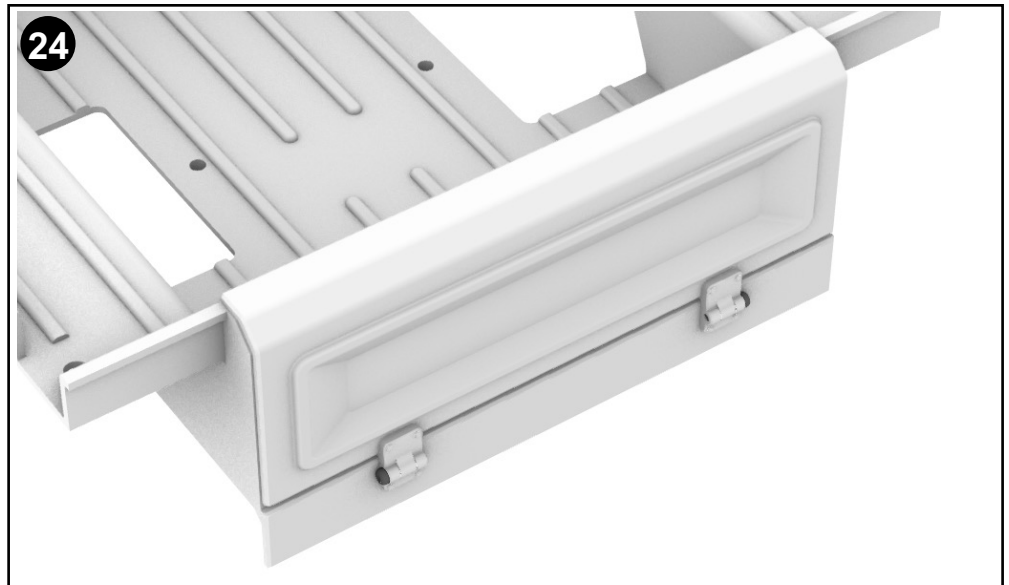
Ensure the parts have all excess material removed before install.

NOTE: we recommend carefully pre-drilling the hinge holes before assembly.



24

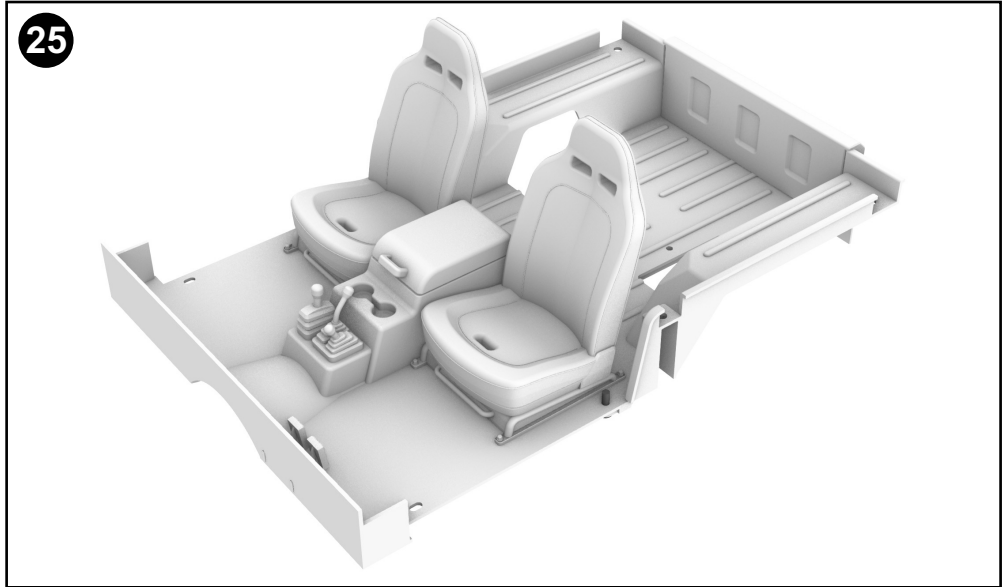
If you do not want a working tailgate you can simply glue the tailgate to the floor



25

Interior floor base complete

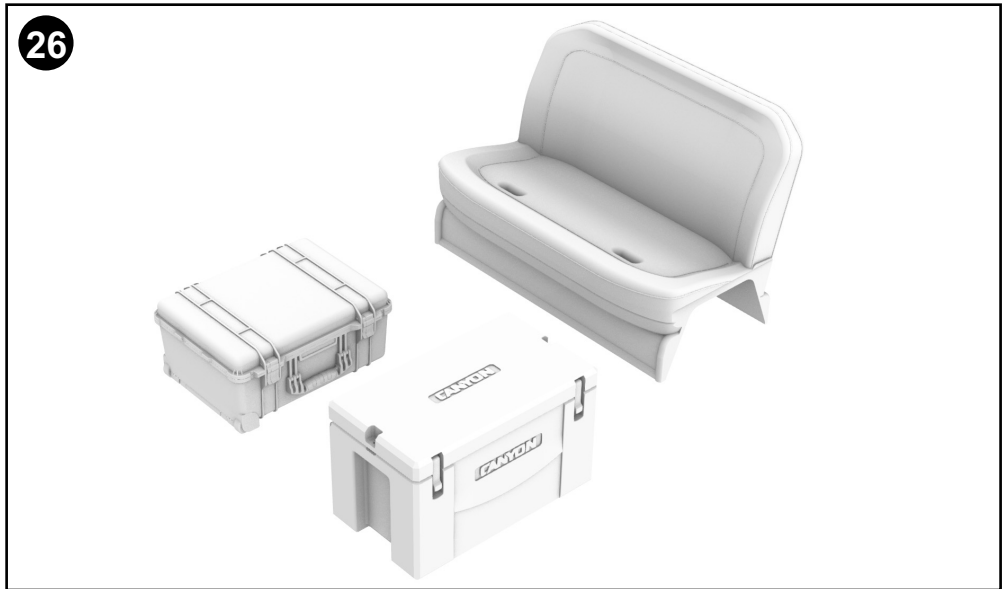
25



26

Rear bed options

26

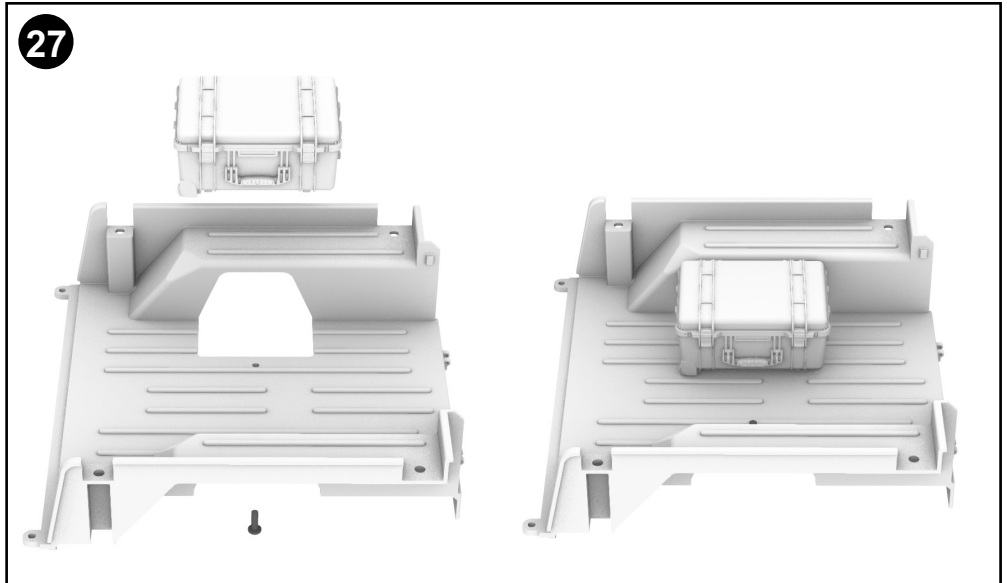


NOTE: The tactical case and cooler can be mounted either side of the bed.

27

Tactical case install

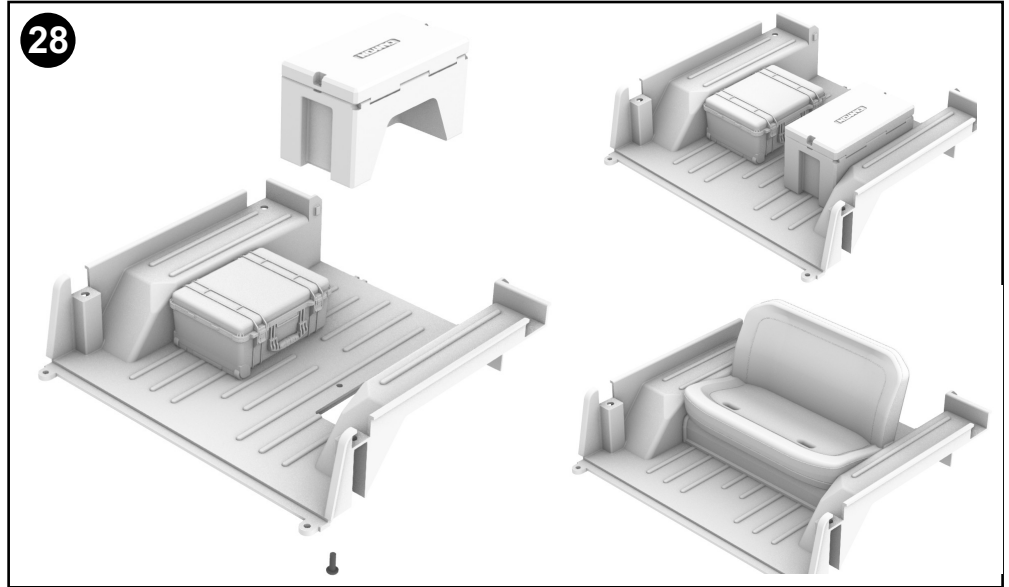
27



NOTE: Use one of the left over screws from the Axial CJ-7 body to hold the parts in place.

28

You can configure the rear bed a number of ways.

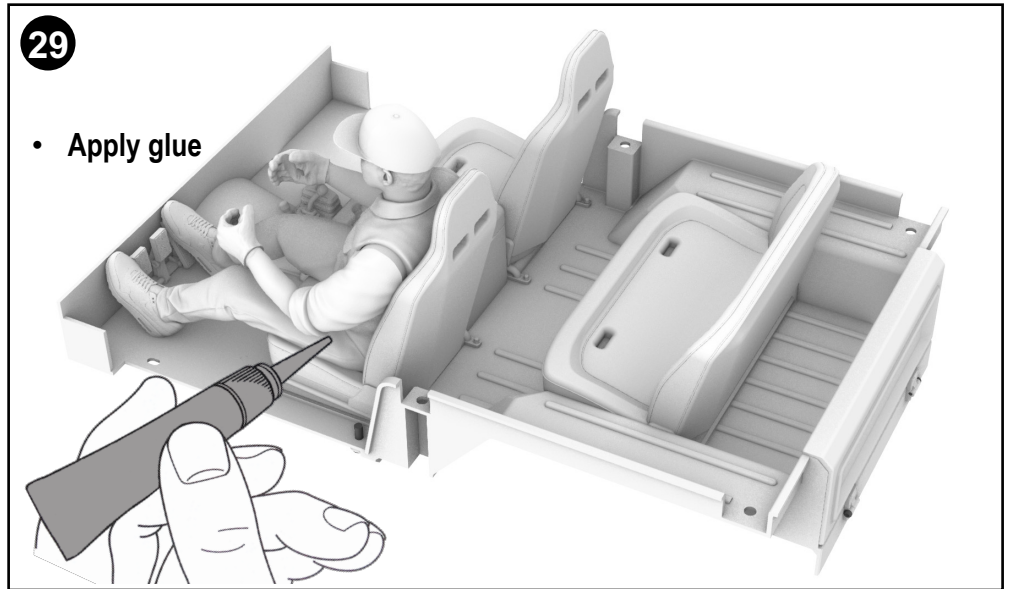


29

Driver install.

Now is the best time to glue the driver in place before you mount to the body. The seat can be adjusted forward and backward if needed.

NOTE: Be sure your head servo is centered before assembly.

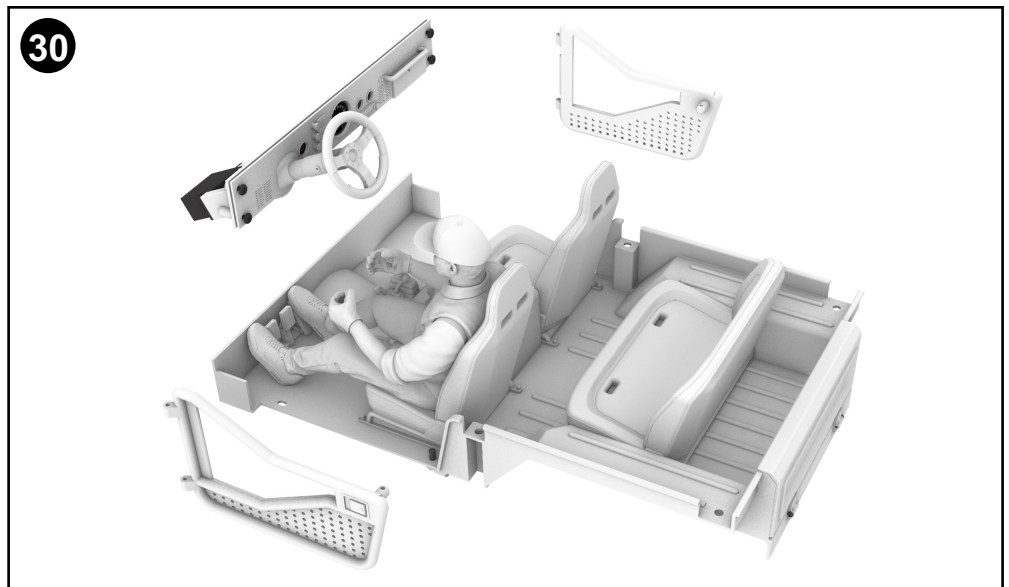


30

Mount interior to the body.

The interior & doors mount to the body in the same way with the same screws as the stock lexan interior & doors they replace.

NOTE: You will need to remove the lexan rear tail gate before assembly



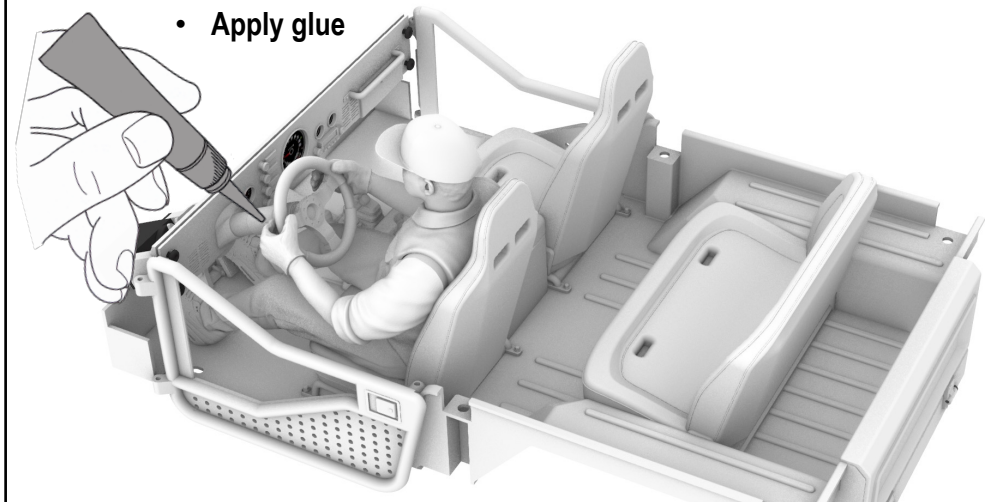
31

Fix the driver hands to the steering wheel.

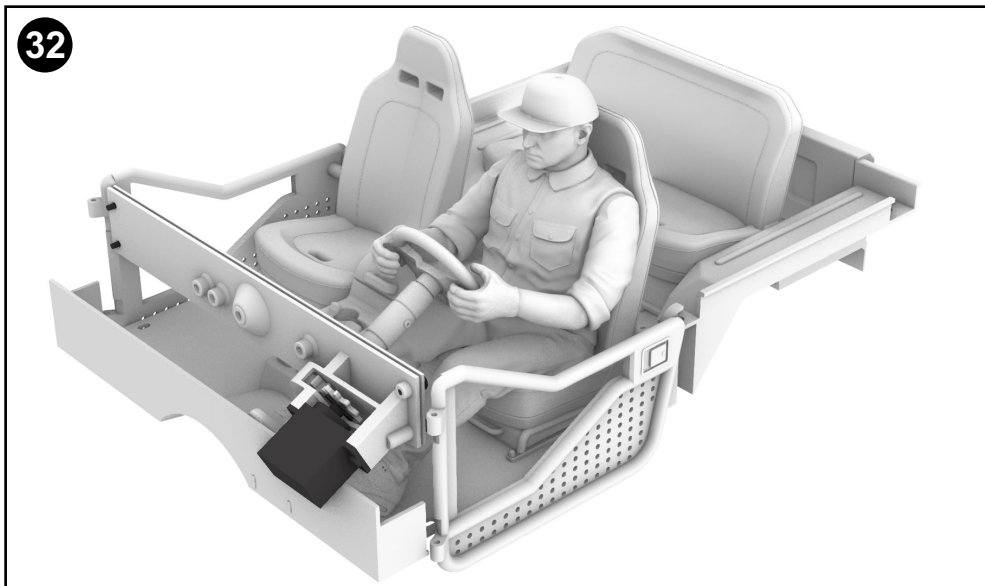
NOTE: Ensure all both servos are centered before gluing the driver hands to the steering wheel.

31

- Apply glue

**32**

CJ-7 working interior is complete.

32

Congratulations, your CJ-7 interior detail set is complete.

Servo set up: There are a few ways to connect your servos to your transmitter depending on the channels available and the features of your transmitter. The simplest way is to use servo lead y-connectors to connect all steering servos to the steering channel. For best results use a channel for each servo and the mixing function on the transmitter to program each servo movement depending on your specific needs.

Note: We recommend Bambu Lab PLA Matte for best results, however PLA has a lower melting point and you should not leave your interior stationary in direct sunlight for extended periods. Doing so might cause parts to warp or deform.